



ATPI Sports Travel

Delivering what really matters™

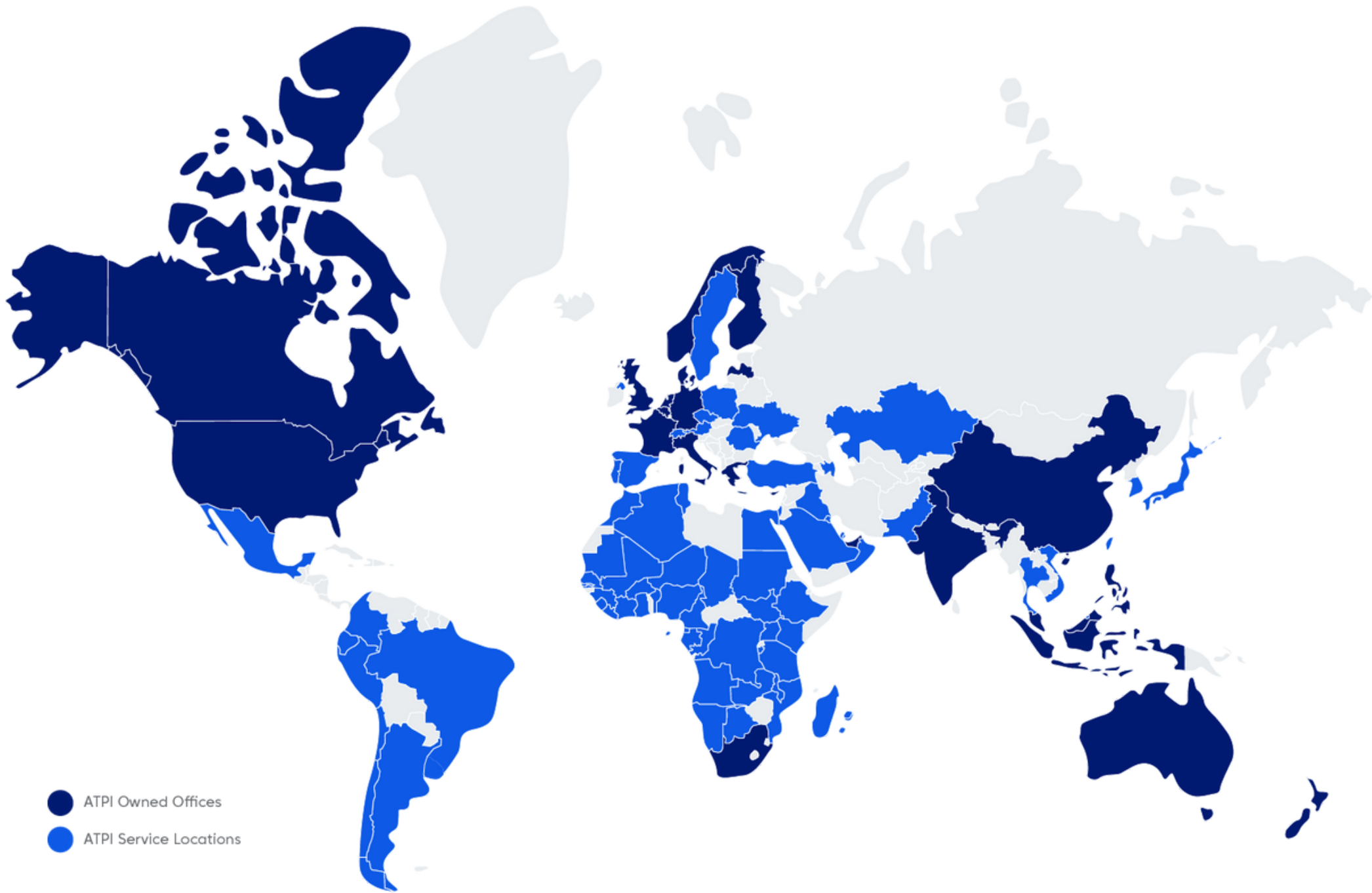
ABOUT ATPI

A worldwide group of expertise

The ATPI Group delivers world-leading corporate travel and events solutions to organisations operating in a variety of specialist sectors across the globe.

Our areas of expertise within the ATPI family combine decades of experience and specialist expertise with innovative technology and a global network.

That's how we are **delivering what really matters** to every single customer.



 Corporate Travel

 Energy Travel

 Events

 Marine Travel

 Media Travel

 Mining Travel

 Sports Travel

 Yacht Travel

 **DIRECT ATPI**
GLOBAL TRAVEL



**136+ Offices
across the world**



**Located in
76+ countries**



**Over 2400+
employees globally**

Why ATPI Sports Travel

ATPI Sports Travel is part of the global corporate travel and management organization ATPI.

From international tournaments to one-off sporting events, ATPI Sports Travel is the perfect partner for delivering smooth and efficient travel for sports teams and athletes. With three decades of experience and in-depth knowledge of the sports industry, ATPI Sports Travel can oversee every aspect of your group travel and offer 24/7 support to seamlessly solve any unexpected issues.

We get your team there no matter what!

- ✓30 years of experience
- ✓Global network
- ✓Purchasing power
- ✓We have been a partner of the Olympic Games, Commonwealth Games, the Rugby World Cup, and various football, running events and sailing races
- ✓Travel specialist for International and National Sports Federations, sporting bodies, and organizing committees.
- ✓Extensive track record in the international world of sports
- ✓A passionate team who stand shoulder-to-shoulder with your team members



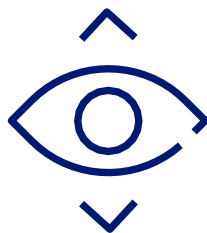
What can we provide to your organisation

ATPI Sports Travel is your dedicated partner for sports travel, offering extensive expertise in the following areas



Individual and Team Travel

Ensuring hassle-free travel arrangements for sports team.



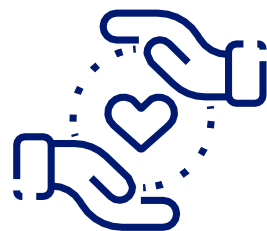
Live Reporting

Providing real-time updates and reporting to allow for informed decision-making and forecasting.



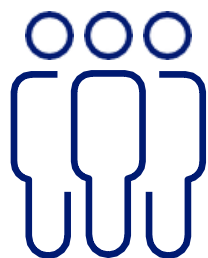
Athlete Travel

Catering to the unique requirements of athletes.



Duty of Care

Prioritising the wellbeing and safety of all travellers. By providing traveller information, insurances and traveller tracking systems.



Group Management (Inventory & Booking)

Efficiently managing group logistics and bookings.



24/7 Traveller Assistance

Offering round-the-clock support for travellers.

Our Expertise

Team travel



We understand that travel is more than just a means of getting from one place to another. It's an integral part of the sporting experience, whether you're an individual athlete or part of a team. Our mission is to elevate your journey, making every aspect of your travel seamless and tailored to your unique needs.

Team travel comes with its own set of challenges, including coordinating schedules, managing large groups, and ensuring everyone arrives ready to compete. Team travel requirements can vary greatly based on your sport, competition schedule, and personal preferences. That's why we offer personalized travel solutions designed to enhance your performance. ATPI Sports Travel is here to make your journey as smooth and rewarding as possible. Let us handle the logistics, so you can focus on achieving your sporting goals. Together, we'll reach new heights in sports travel excellence.

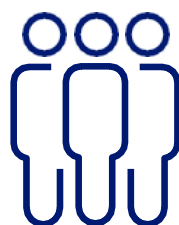
Athlete travel



Years of international sports experience have taught us what it's like to provide logistical support to top athletes. We all know that every detail matters, especially in high-level sports.

ATPI's Sports Travel Desk is a specialised and dedicated full-service travel and logistics team that works exclusively for our sports customers and is available 24/7. We all know that preparation, timing, adaptability, and quality determine whether you win or lose. Our goal is to 'unburden' the sports professional in all aspects of hassle-free travel, such as creating the best travel schedule, transporting special equipment, and reserving that extra-long bed. We take a proactive approach to all (travel) issues that you will face as an athlete, booker, driver, or technical manager. Our team has a wealth of experience in escorting teams and business relationships to various locations around the world.

Group Management and Inventory booking

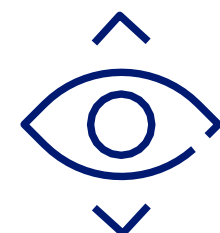


A group booking is required for flights with more than ten people on the same flight.

Such bookings are more complicated than arranging a regular flight, owing to the more difficult project management involved in booking tickets on scheduled flights or the exclusivity of arranging a charter for a group. Seating (preferably next to each other), flexibility in providing traveller data (last-minute passenger changes), purchasing and planning the trip from A to Z (including smart buying and price comparison), and the (free) cancellation of tickets up to a certain period prior to the trip are just a few examples

Our Expertise

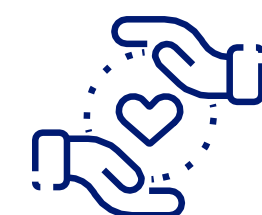
Live reporting



Taking the noise out of the travel programme: ATPi Analytics not only provides visibility into your spending, but our data reporting suite also demonstrates the cost-effectiveness of your travel management policy and how it contributes to lowering the total cost of staff travel

Understanding your travel data is critical in making difficult decisions during a time of uncertainty. Your ability to effectively manage your travel budget is limited unless you know what you spend and why. Our experience has taught us that travel data is the foundation of any successful travel strategy. With complete visibility of travel analytics such as total cost of operation, most traveled routes, and booking lead time, you can spot trends and leverage them to secure better fares with our expert account managers.

Duty of Care



Safety and security is paramount to every travel programme. Threats to sports travellers are no longer confined to remote locations, but also destinations that were previously considered 'safe'. ATPi Sports Travel offers a comprehensive duty of care programme that enables you to track, support and inform your travellers throughout their journey.

As an organisation, you have responsibilities to ensure the maximum safety and security for your teams, athletes and staff while travelling. That's why ATPi Sports Travel offers a proactive duty of care programme that is tailored to your organization's safety and security priorities, providing global coverage and the level of support you require whenever you need it.

24/7 Traveller Assistance



Experts on hand at any time, to get your staff, executives, high-performance athletes & teams wherever they need to be.

Our emergency service is managed in-house around the world and around the clock to ensure you receive the highest level of service when you need it the most. Our 24/7 service team is your safety net for managing e-tickets, re-ticketing, and flight re-validations, new urgent bookings, amendments or changes to existing bookings, assistance with delayed, cancelled flights, missed connections, lost baggage, and a dedicated support service for when extreme weather disruption strikes.




ATPI Sports Travel



Delivering what really matters™

Our service offer

Our comprehensive range of services is designed to suit the distinctive needs of athletes and sports teams. Our support includes:



Research & feasibility analysis

Our in-depth pre-travel research includes a comprehensive accessibility and feasibility analysis, which includes meticulously evaluating different flight, routes, rates, ground transportation, and supplier options to create an informed shortlist supported by initial costings.



Sourcing & Contracting

Trust our expert team to source and contract air carriers and charter companies, putting terms and conditions in place that deliver optimal service and cost efficiencies.



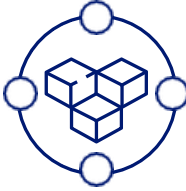
Project Management

Trust our expert team to source and contract air carriers and charter companies, putting terms and conditions in place that deliver optimal service and cost efficiencies.



Communications & Registration

Using a user-friendly web portal or customised registration platform, we harness technology to manage traveller bookings and utilise bespoke apps for seat allocation, inventory management, and insightful reporting.



Logistics

Ensuring smooth travel logistics, including arranging appropriate accommodation and transportation options. Our skilled management of group, individual, and charter flights, baggage handling, and equipment logistics ensures a seamless experience.




Sustainability

Our team measures and offsets travel emissions, while also helping to develop strategies for emission reduction in line with environmental sustainability goals.



Onsite Management

We can prepare comprehensive itineraries, conduct staff and supplier briefings, and ensure a smooth execution by assigning dedicated local programme managers, tour leaders, and hosts.



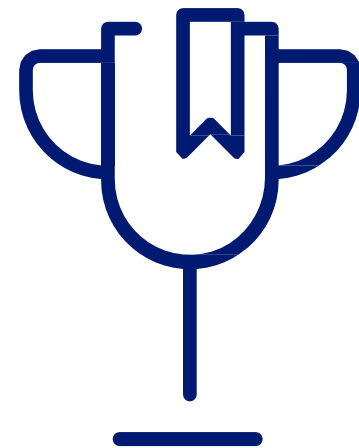
Finance & Reporting

By compiling valuable data and conducting guest surveys, we can provide a detailed post-travel analysis while also facilitating accurate financial accounting and reconciliation.

Travel Technology

We will improve your performance by customizing a service configuration to your specific sports travel logistic requirements. Our team provides a hassle-free travel and logistics experience that is tailored to the needs and preferences of your employees, executives, high-performance athletes, and teams. Regardless of the complexity of the itinerary, our travel specialists create and manage every aspect of it. Empowered to be proactive, act quickly, and do whatever it takes to keep your travellers moving and your travel and logistics programme on track.

ATPI's Sports Events experts are committed to providing consistently high-quality service that our clients value. We are proud that we can be part of top sporting achievements in a modest but decisive way. Our aim is to take the noise out of your travel programme of everything that can complicate travel and accommodation.



We are always happy to do everything we can to contribute to your success!

**“ A one-stop shop
travel and logistics
services for executives,
staff, high performance
athletes & teams ”**

Travel Technology

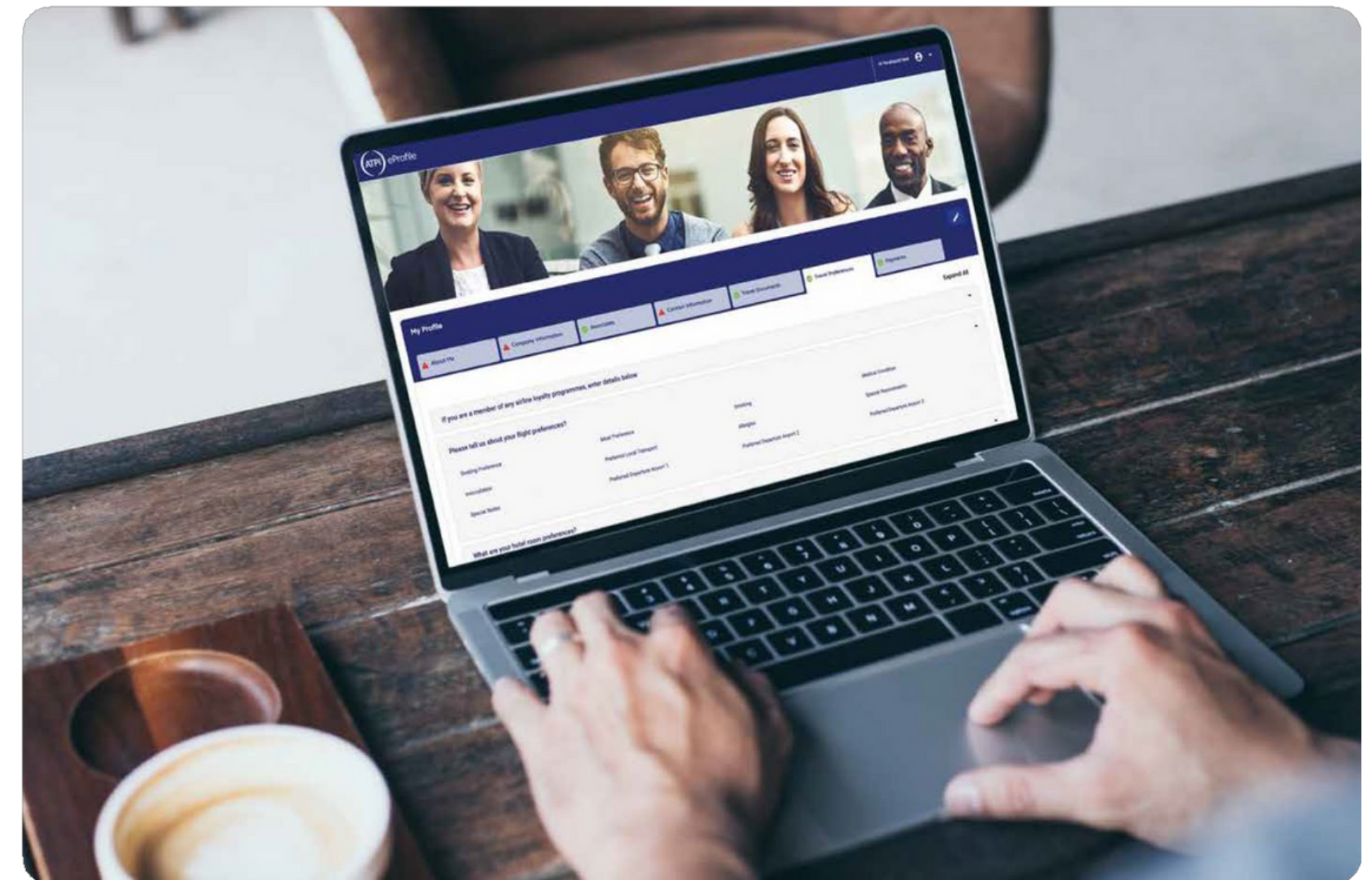
ATPI Eprofile™

A centralised traveller profiling solution that results in better booking, less administration, and happier travellers.

ATPI eProfile™ functions as a master database that integrates with all ATPI and third-party technology, completing up-to-date traveller details, visa information and preferences at the touch of a button.

Key deliverables:

- ✓ ATPI eProfile™ saves time for travel managers, bookers, and travellers by expediting the process of arranging sports travel.
- ✓ ATPI eProfile™ pre-populates booking forms with relevant traveller details, removing the risk of human error in the process.
- ✓ With an intuitive and easy-to-navigate interface, ATPI eProfile™ allows you to access and maintain your traveller profiles seamlessly, always keeping you in control.



Travel Technology

ATPI TravelHub™

ATPI TravelHub, our mobile-responsive platform, allows you to manage the entire travel process for your organisation. TravelHub puts the necessary tools, technology, and data at the fingertips of those who require them. ATPI TravelHub™ is an unrivalled, all-in-one corporate travel dashboard, giving you a single platform to access, control and manage all business travel in a way that works for your organisation.

Key deliverables:

- ✓ One single platform to access, control and manage your entire travel programme
- ✓ Relevant travel tools, technology and data at the fingertips of users, tailored to their personal profile
- ✓ Single sign-on and integration with your internal systems
- ✓ Customisable, intuitive structure and navigation
- ✓ A choice of products, data and content
- ✓ All in one place, 365/24/7
- ✓ Multiple hierarchy levels



Travel Technology

ATPI Atriis™

Manage your organisation's flights, accommodations, and ground transfers all in one place. With ATPI-exclusive features, Atriis' self-service booking tool provides organisations with everything they need to book corporate travel in an efficient and cost-effective manner.

Key deliverables:

- ✓ Atriis has transformed the travel booking process by combining exclusive fares, NDC content, and a wide range of travel options
- ✓ One simple, self-service booking tool
- ✓ Bringing efficiency and control to sports travel management.
- ✓ Book flights, accommodation, and ground transfers all in one booking tool
- ✓ Including expert support of ATPI Sports Travel specialist agent



Our sports event toolbox

You are in control with ATPI's event toolbox from registration to event communication.

ATPI's powerful sports event toolbox maximizes event planning productivity across all event stages from invitation, registration, and planning from event day to post-event feedback and reporting. Our sports event toolbox is designed to simplify guest management and enhance your guest experience with branding opportunities that will help you bring your event to the next level!

Additionally, our event toolbox offers real-time reporting and analytics to help you gain insights into your event attendance and engagement. Our guest management tools provide easy-to-use interfaces, and powerful features to help you manage your event with ease.



With ATPI's sports event toolbox at your fingertips, your guest management has never been so easy!

With our sports event toolbox, you can easily:

- Create and manage GDPR-proof guestlists through our registration portal
- Send invitations, reminders and track RSVPs
- Fully customize event registration forms
- Collect and export guest data, often useful for hotel lists, and agenda overviews
- Design customized event registration, websites, and apps branding
- Manage tickets
- Organize guest segmentation, split guests into different groups, and ask them questions that are only visible for the segment or communicate with them exclusively
- Send push notifications to keep your guests engaged and entertained throughout the event
- Send communications to your guests via text messages, in-app push notifications, and emails
- Handling all types of payments (credit card, visa, and others or implementing different solutions) for practical use such as travel bookings, courses, accommodation, etc.
- Organize hybrid events including live streams • Print unique QR codes and on-site check-in
- Manage your accommodation with a GDPR-proof hotel portal login to check registered guests
- Manage sessions and hotel inventory



ATPI Halo

Carbon neutral travel & events solution

ATPI is committed to sustainable travel & events

- ✓ One of the fundamental principles of our commitment to business sustainability is to empower all our clients to achieve their ambition of Sustainable Travel & Events.
- ✓ Many clients are focused on reducing their Scope 1 & Scope 2 direct emissions, and are grateful for help in addressing Scope 3 indirect emissions related to travel and events, which can be complex, or simply not their initial priority.
- ✓ Our Sustainable Travel & Events proposition is to ensure that all our clients have the opportunity to, and are encouraged to, wherever possible, make their travel and events as sustainable as possible.
- ✓ They can achieve this by making their travel & events CO2(e) neutral by following our Methodology:
Measure-> Reduce-> Offset
- ✓ We enable them to Measure Reduce and Offset any CO2(e) impact accurately and meaningfully.

ATPI Halo

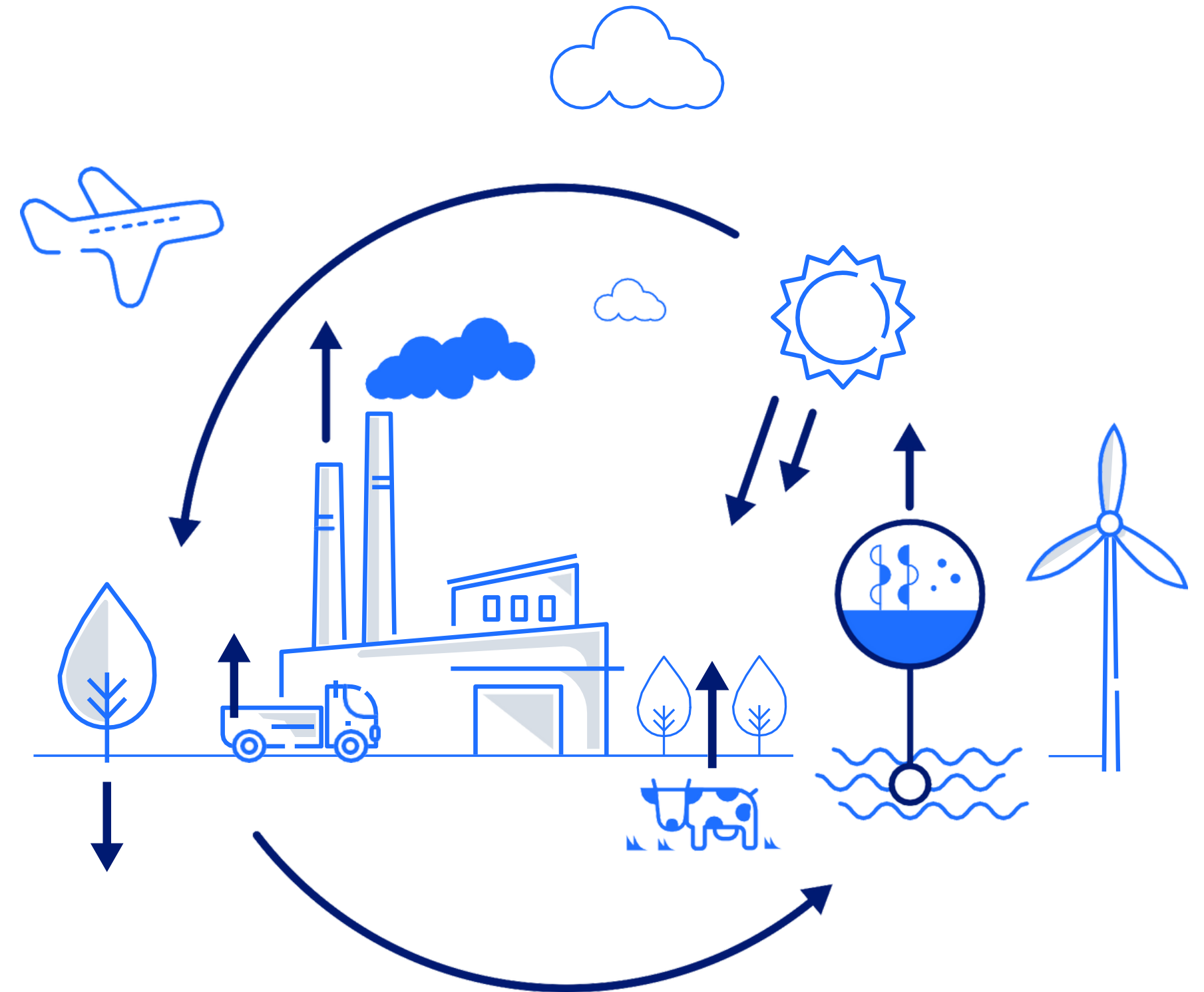
ATPI Halo is a carbon measurement, reduction and offset service.

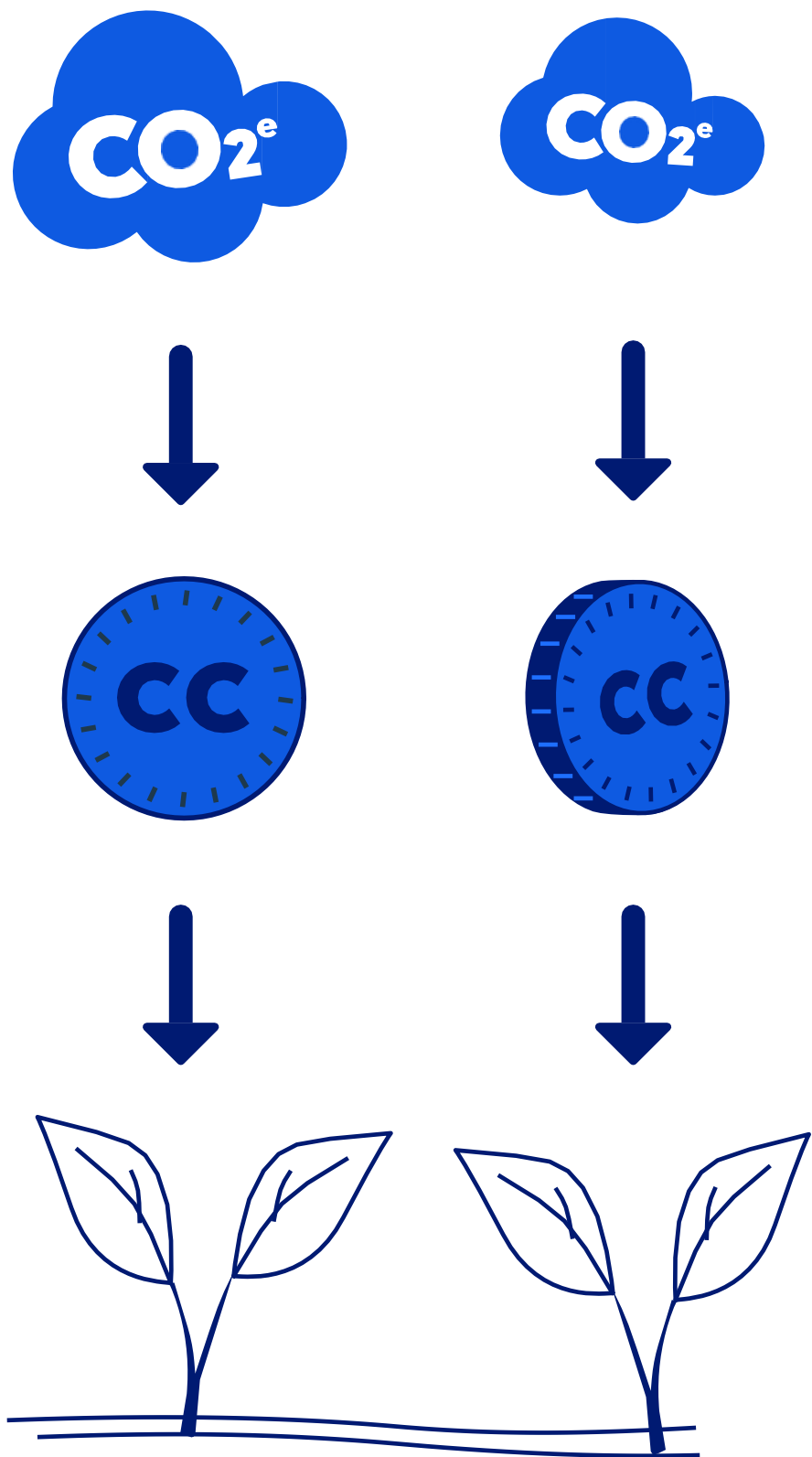
Supporting Clients develop and drive more sustainable travel programs by adopting 3 core principles that will help them achieve 2030 and 2050 GHG emissions reduction goals:



You cannot reduce what you don't measure

- ✓ **MEASURE** - Presentable CO2 footprint data collected during the travel/event booking process.
- ✓ **REDUCE** - Consulting clients in finding ways to reduce their travel related CO2 footprint, through reducing unnecessary travel, and making more sustainable choices.
- ✓ **OFFSET** - ATPi Halo offers a range of high-quality offset projects to enable clients to offset their unavoidable emissions





Carbon Neutral Events

We apply our successful ATPi Halo approach: **Measure – Reduce- Offset**

Paying attention to carefully check on every event element through the different **event phases**, we deliver the most sustainable event possible

Pre-Event	During Event	Post Event
<ul style="list-style-type: none">• Sales conversation with clients on event sustainability, measurement and offsetting• Discuss sustainable programme needs & budget <p>Programme measurement with estimated relevant CO2e data – in event measurement Tool</p> <ul style="list-style-type: none">• Discuss reduction options, if viable• Supplier management (aim to engage with suppliers who support "green credentials"– contract KPI's, operational delivery, CO2e data output	<ul style="list-style-type: none">• Register last-minute programme changes with potential CO2e impact• Monitor and capture all relevant CO2e data	<ul style="list-style-type: none">• Update measurable CO2e data with accurate figures• Import any agreed 3rd party data for CO2e calculation• Complete data measurement in event measurement tool• Finalise carbon footprint impact report & review with client• Offset unavoidable emissions with certified offset projects through ATPi Halo• Provide offset certificate in the client's name• Save all data for future sustainable event improvement

ATPI is committed to sustainable travel & events Programmes



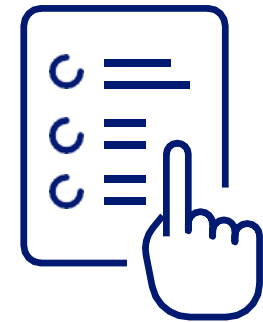
Reporting

Historical CO2 emissions, plus event footprint planning & All to help budget for & improve future travel/events



Consultancy

Tailored approach to sustainable travel/events for your organisation via your ATPI Event or Account Manager



Choice

ATPI offers ca. 10 fully certified carbon credit projects



Certification

Official annual offset certification providing transparency and proving sustainability credentials



Transparency

ATPI Halo is transparent and auditable

The benefits of working with ATPI Sports Travel

1



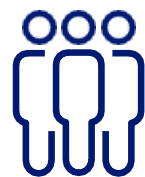
Access to Sports Travel knowledge and experience through our team of industry experts

3



Access sports events knowledge of our team of industry experts

2



Work with a team who acts as an extension of your organisation

4



Improve efficiency by finding everything you need under one roof

YOU ARE IN GOOD HANDS!



OLYMPIC GAMES

ATPI has been involved in the Olympic and Paralympic Games in various travel and event roles since 1998. including being Official Ticket & Travel Partner for the Canadian and The Netherlands National Committee and official supplier of the Holland Heineken House.



RUNNING

Our expertise around running projects for corporate and charity teams was built up during the many worldwide running experiences we organised in New York, London, Boston, Tokyo, Berlin and many more locations around the world.



SAILING

As the official hospitality agency and travel, accommodation and hospitality partner for several team sponsors, ATPI Sports Events was involved in the last editions of The Ocean Race.



FOOTBALL

For many years API Sports Events has been the official travel partner of numerous professional football clubs and national associations, including Premier League. We have also executed travel and hospitality programmes for corporate business around the World Cup, European Cup as well as Champion League finals for almost 30 years.



RUGBY

Our rugby experience ranges from moving rugby teams to hospitality projects for major sponsors during World Cups. API Sports Events acted as an Official Travel Agent for Rugby World Cup 2015 and supplied one of the global marketing partners with hospitality and logistics services.



COMMONWEALTH GAMES

ATPI Sports Events was the Games Travel Office partner for the Glasgow 2014 Commonwealth Games, and co-exclusive travel package provider of the Gold Coast 2018 Commonwealth Games.

What our clients say

"What a fantastic Champions League Final you have delivered; we are overwhelmed with compliments from partners and colleagues: everyone thought it was amazing. The hotels, transportation, the app, the hospitality itself: everything was taken care of to perfection. Mega thanks for everything, and we will undoubtedly speak to each other soon!"

Marijn Luchtman - Global Head of Sponsorships Just Eat Takeaway.com

"ATPI is an incredible partner. The past two years of COVID-19 caused much uncertainty, and we knew we could always count on them," Jacquie Ryan, Chief Brand and Commercial Officer of the COC and CEO of the Canadian Olympic Foundation, says. "During Games periods they are truly a part of Team Canada, helping our logistics team manage the incredibly complex task of getting all members of Team Canada and many of their supporters around the world and back safely. Regarding Tokyo of course, ATPI's efforts to get Canadians full refunds was tireless and something that truly sets them apart."

Jacquie Ryan Chief Brand and Commercial Officer of the COC and CEO of the Canadian Olympic Foundation

"Weightlifting Canada Haltérophilie had the pleasure of working with ATPI for the Tokyo 2020 Olympic Games. The COVID pandemic, rule changes by the local organizing committee, and flight cancellations created many challenges for our team's travel planning, often at the last minute. ATPI provided expert and timely assistance at every turn, and we could not have found a more reliable partner to work with. We look forward to working with them again.

Craig Walker, President, Weightlifting Canada Haltérophilie

"ATPI Sports Events are extremely professional, really efficient and they're a great company to work with. We've recommended them not only to partners but also to friends and family and all our race crew. I really look forward to working with them again in the future"

Matt Pettit, Operations & Logistics Manager, Clipper Ventures

"ATPI's service is always quick and exceptionally efficient. Over the last twelve months this has never been more important as we have required responsive support for most of our travel arrangements. Our operations and performance teams regularly work with the dedicated ATPI team, giving us complete confidence that the travel for our squads has been diligently planned."

British Wheelchair Basketball

"ATPI has been a fantastic asset in helping our team meet its travel needs. In the age of Covid-19, being able to make changes and pivot quickly has been of great importance to us and ATPI has been an invaluable resource in being able to do just that. The staff at ATPI continue to provide world-class service and we definitely recommend reaching out to them if you are looking for travel services!"

Jennifer Stairs - High Performance Coordinator

» Some of our cases «

Canadian Olympic Committee



The Invictus Games



Clipper Round The World Yacht Race





Thank you for your time

Delivering what really matters™